



Trait Leaders

The following information highlights the top three highest scoring bulls for each trait.

Trait	No1	No2	No3
£ PLI	Allstar 195	Lix 188	Jante 163
Milk kg	Levon 562	Kyros 513	Blueprint 503
Butterfat kg	Allstar 31.9	Maximus 28.8	Lix 24.0
Protein kg	Blueprint 19.7	Impuls 17.4	Jante 17.0
Butterfat %	Maximus +0.38	Lix +0.37	Allstar +0.27
Protein %	Lix +0.20	Maximus +0.14	Zik +0.11
SCC	Holmer -27	Jante -23	Lix -11
Life Span	Tim +0.3	Zik +0.3	Hagri +0.3
Fert Index	Legacy +10.1	Hagri +8.2	Holmer +5.8
Legs & Feet	Tequila +2.2	Excitation +1.9	Belles Pride +1.8
Mammary	Tequila +3.1	Excitation +2.5	Belles Pride +2.4
Type	Tequila +3.5	Belles Pride +2.4	Excitation +2.4



ALLSTAR JH1F

Sunset Canyon Anthems Allstar

Maximus JH1F x EX95(3) Berretta JH1C x EX90 Brook

SEXED SEMEN
NOW
AVAILABLE



Dam: Sunset Canyon MBSB Anthem EX95(3)

Dtr: Trinitys Allstar Melody

Dtr: Norse Star Allstar VG84

Photos by left to right: Frank Robinson, Eileen DeBruin, Eileen DeBruin

Trait		-3	-2	-1	0	1	2	3		Value
Type Merit	Poor								Excellent	1.6
Stature	130cm								154cm	1.6
Chest Width	Narrow								Wide	-0.1
Body Depth	Shallow								Deep	N/A
Angularity	Coarse								Sharp	1.4
Rump Angle	High pins								Low pins	0.8
Rump Width	Narrow								Wide	-0.3
Rear Legs Side	Straight								Sickled	-0.1
Foot Angle	Low								Steep	0.6
Fore Udder Attach	Loose								Tight	0.1
Rear Udder Height	Very Low								Very high	2.4
Udder Support	Broken								Strong	0.5
Udder Depth	Below hock								20cm above	0.7
Teat Position Rear	Outside								Close	N/A
Teat Position Side	Close								Apart	N/A
Teat Length	Short								Long	1.1
Temperament	Poor								Good	N/A
Ease of Milking	Slow								Fast	N/A
Locomotion	Poor								Excellent	N/A
Composite Traits										
Dairy Strength	Poor								Excellent	1.3
Legs & Feet	Poor								Excellent	0.9
Mammary	Poor								Excellent	1.5

Milk kgs	315
Fat kgs	31.9
Fat %	0.27
Prot kgs	17
Prot %	0.09
SCC	-1
Rel %	68
PIN £	46
PLI £	195
PTAT	1.6
Lifespan	0.1
Fertility In	-4.4

- ✓ Top production and type sire
- ✓ No 2 UK PLI sire
- ✓ Highest weight of butterfat improver
- ✓ Outstanding dairy frames



GOVERNOR JH1F

Griffens Governor

Sambo JH1F x EX94 Master C Tops x Lloyn Freds Gold EX
2-Can x Lloyn Topas Gold 31 EX x Lloyn Surville Gold 18 EX



Dtr: Governor Angel of Family Hill

Dtr: Family Hill Governor Favor VG89

Dtr: Diamond S Governor Joya VG89

Photos by left to right: Lea McCullough, Cybil Fisher, Cybil Fisher

Trait		-3	-2	-1	0	1	2	3	Value
Type Merit	Poor							Excellent	2.1
Stature	130cm							154cm	2.3
Chest Width	Narrow							Wide	0.7
Body Depth	Shallow							Deep	2.1
Angularity	Coarse							Sharp	1.9
Rump Angle	High pins							Low pins	0.4
Rump Width	Narrow							Wide	0.1
Rear Legs Side	Straight							Sickled	-0.6
Foot Angle	Low							Steep	1.4
Fore Udder Attach	Loose							Tight	1.4
Rear Udder Height	Very Low							Very high	1.5
Udder Support	Broken							Strong	1.0
Udder Depth	Below hock							20cm above	0.3
Teat Position Rear	Outside							Close	N/A
Teat Position Side	Close							Apart	0.0
Teat Length	Short							Long	1.4
Temperament	Poor							Good	1.2
Ease of Milking	Slow							Fast	N/A
Locomotion	Poor							Excellent	0.3
Composite Traits									
Dairy Strength	Poor							Excellent	1.6
Legs & Feet	Poor							Excellent	1.3
Mammary	Poor							Excellent	1.6

Milk kgs	155
Fat kgs	8.8
Fat %	0.01
Prot kgs	3.3
Prot %	-0.05
SCC	3
Rel %	82
PIN £	9
PLI £	62
PTAT	2.1
Lifespan	0
Fertility In	4.1



- Proven Sambo from Madison Champion
- High daughter fertility
- Extreme style
- Exceptional udder improvement

AI Code: J2073 HBN: 76-115087248 aAa: 612 Source: USA



HOLMER



DJ Holmer

Q Hirse x Fyn Lenvig JH1F x Jas Bregne



Holmer Danish daughter

Holmer Danish daughter

Photos by Ely Geverink

Trait		-3	-2	-1	0	1	2	3	Value
Type Merit	Poor								Excellent 0.5
Stature	130cm								154cm 0.1
Chest Width	Narrow								Wide 0.8
Body Depth	Shallow								Deep 0.7
Angularity	Coarse								Sharp 0.3
Rump Angle	High pins								Low pins -0.2
Rump Width	Narrow								Wide -0.2
Rear Legs Side	Straight								Sickled 0.6
Foot Angle	Low								Steep 0.7
Fore Udder Attach	Loose								Tight 0.7
Rear Udder Height	Very Low								Very high 0.7
Udder Support	Broken								Strong 0.9
Udder Depth	Below hock								20cm above 0.3
Teat Position Rear	Outside								Close N/A
Teat Position Side	Close								Apart N/A
Teat Length	Short								Long -0.4
Temperament	Poor								Good N/A
Ease of Milking	Slow								Fast N/A
Locomotion	Poor								Excellent N/A
Composite Traits									
Dairy Strength	Poor								Excellent 0.3
Legs & Feet	Poor								Excellent 0.2
Mammary	Poor								Excellent 0.6

Milk kgs	140
Fat kgs	13.9
Fat %	0.12
Prot kgs	9.1
Prot %	0.07
SCC	-27
Rel %	70
PIN £	23
PLI £	151
PTAT	0.5
Lifespan	0.1
Fertility In	5.8

- ✓ Ideal across Impuls daughters
- ✓ High daughter fertility
- ✓ Great scc improver
- ✓ Longevity



AI Code: J2277 HBN: 66-303057 aAa: 324 Source: Viking



IMPULS JH1F

Q Impuls

SKAE Ide x JAS Byg x FYN Haug



Dtr: Lagangreen Impuls Anneka VG86

Impuls Danish daughter

Dtr: September Star Impuls VG87

Photos by left to right: Jane Steel, Ely Geverink, Cybil Fisher

Trait		-3	-2	-1	0	1	2	3	Value
Type Merit	Poor								Excellent 0.6
Stature	130cm								154cm 1.4
Chest Width	Narrow								Wide -0.2
Body Depth	Shallow								Deep 1.0
Angularity	Coarse								Sharp 0.9
Rump Angle	High pins								Low pins 1.0
Rump Width	Narrow								Wide -0.2
Rear Legs Side	Straight								Sickled -0.5
Foot Angle	Low								Steep 0.5
Fore Udder Attach	Loose								Tight -0.2
Rear Udder Height	Very Low								Very high 0.8
Udder Support	Broken								Strong -0.7
Udder Depth	Below hock								20cm above 0.2
Teat Position Rear	Outside								Close N/A
Teat Position Side	Close								Apart 0.5
Teat Length	Short								Long -0.3
Temperament	Poor								Good 0.6
Ease of Milking	Slow								Fast N/A
Locomotion	Poor								Excellent -0.3
Composite Traits									
Dairy Strength	Poor								Excellent 0.8
Legs & Feet	Poor								Excellent 0.1
Mammary	Poor								Excellent 0.4

Milk kgs	372
Fat kgs	18.2
Fat %	-0.03
Prot kgs	17.4
Prot %	0.05
SCC	1
Rel %	98
PIN £	34
PLI £	158
PTAT	0.6
Lifespan	0.1
Fertility In	2.5

- ✓ High ranking PLI bull
- ✓ Internationally proven to increase milk yield and quality
- ✓ Fantastic fertility and lifespan
- ✓ Solid functional farmers' cows



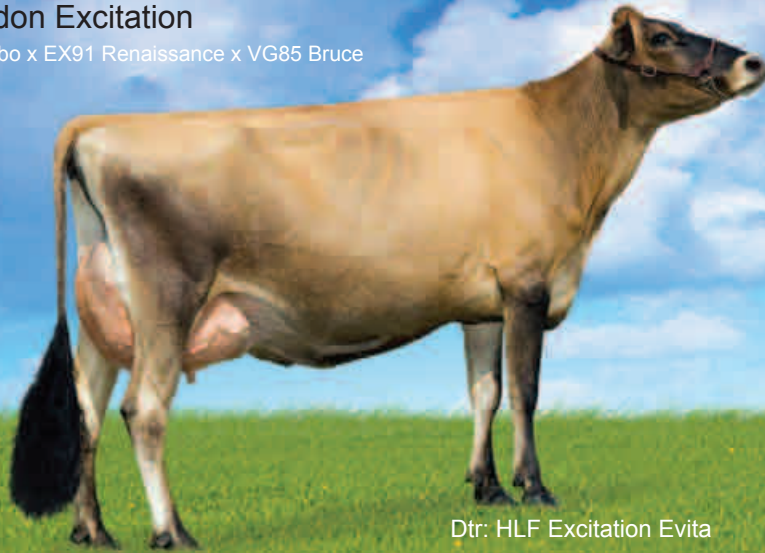
AI Code: J9317 HBN: 66-301592 aAa: 261 Source: Viking



EXCITATION JH1F

Bridon Excitation

Sambo x EX91 Renaissance x VG85 Bruce



Dtr: HLF Excitation Evita

- ✓ High fertility
- ✓ Fantastic udders
- ✓ Long-life producers
- ✓ High type

Photo by Lea McCullough

JANTE JH1F

DJ Jante

M Jace x ODA Rix x FYN Lemvig



Dtr: Mjallerup Jante Jane VG84

- ✓ Leading Jace son available
- ✓ Tremendous milk
- ✓ Significantly improves rump width
- ✓ Great udder support

Photo by Jane Steel

Trait		-3	-2	-1	0	1	2	3	Value
Type Merit	Poor							Excellent	2.4
Stature	130cm							154cm	1.4
Chest Width	Narrow							Wide	-0.1
Body Depth	Shallow							Deep	-0.2
Angularity	Coarse							Sharp	0.8
Rump Angle	High pins							Low pins	-0.4
Rump Width	Narrow							Wide	-0.3
Rear Legs Side	Straight							Sickled	-3.2
Foot Angle	Low							Steep	2.4
Fore Udder Attach	Loose							Tight	3.3
Rear Udder Height	Very Low							Very high	1.5
Udder Support	Broken							Strong	0.7
Udder Depth	Below hock							20cm above	3.4
Teat Position Rear	Outside							Close	N/A
Teat Position Side	Close							Apart	0.7
Teat Length	Short							Long	-0.2
Temperament	Poor							Good	-0.1
Ease of Milking	Slow							Fast	N/A
Locomotion	Poor							Excellent	2.4
Composite Traits									
Dairy Strength	Poor							Excellent	0.8
Legs & Feet	Poor							Excellent	1.9
Mammary	Poor							Excellent	2.5

Milk kgs	210
Fat kgs	8.4
Fat %	-0.05
Prot kgs	4.3
Prot %	-0.07
SCC	12
Rel %	89
PIN £	8
PLI £	69
PTAT	2.4
Lifespan	0.1
Fertility In	1.2



Trait		-3	-2	-1	0	1	2	3	Value
Type Merit	Poor							Excellent	0.9
Stature	130cm							154cm	1.7
Chest Width	Narrow							Wide	0.9
Body Depth	Shallow							Deep	0.6
Angularity	Coarse							Sharp	1.3
Rump Angle	High pins							Low pins	-0.4
Rump Width	Narrow							Wide	1.6
Rear Legs Side	Straight							Sickled	0.4
Foot Angle	Low							Steep	1.3
Fore Udder Attach	Loose							Tight	-0.8
Rear Udder Height	Very Low							Very high	0.3
Udder Support	Broken							Strong	2.5
Udder Depth	Below hock							20cm above	-0.5
Teat Position Rear	Outside							Close	N/A
Teat Position Side	Close							Apart	N/A
Teat Length	Short							Long	1.7
Temperament	Poor							Good	N/A
Ease of Milking	Slow							Fast	N/A
Locomotion	Poor							Excellent	N/A
Composite Traits									
Dairy Strength	Poor							Excellent	1.0
Legs & Feet	Poor							Excellent	0.5
Mammary	Poor							Excellent	0.6

Milk kgs	472
Fat kgs	22.6
Fat %	-0.04
Prot kgs	17
Prot %	-0.02
SCC	-23
Rel %	77
PIN £	34
PLI £	163
PTAT	0.9
Lifespan	0.1
Fertility In	-2.4



KYROS JH1F

Sunset Canyon Kyros

Action x EX90 Big Time x EX93(3) Fyn Haug



Dtr: WF Kyros Dakota

Dtr: RSF Art Little Bee

Dtr: Spruce Avenue Kyros Carom VG84

Photos by left to right: Lea McCullough, John Erbsen, Jon Karn

Trait		-3	-2	-1	0	1	2	3	Value
Type Merit	Poor					█	█	█	Excellent 1.7
Stature	130cm					█	█	█	154cm 2.3
Chest Width	Narrow					█	█	█	Wide 0.3
Body Depth	Shallow					█	█	█	Deep 0.5
Angularity	Coarse					█	█	█	Sharp 1.8
Rump Angle	High pins					█	█	█	Low pins 1.3
Rump Width	Narrow					█	█	█	Wide 0.8
Rear Legs Side	Straight					█	█	█	Sickled 0.9
Foot Angle	Low					█	█	█	Steep 0.4
Fore Udder Attach	Loose					█	█	█	Tight 0
Rear Udder Height	Very Low					█	█	█	Very high 2.2
Udder Support	Broken					█	█	█	Strong 0.7
Udder Depth	Below hock					█	█	█	20cm above 0.9
Teat Position Rear	Outside					█	█	█	Close N/A
Teat Position Side	Close					█	█	█	Apart N/A
Teat Length	Short					█	█	█	Long 1.6
Temperament	Poor					█	█	█	Good N/A
Ease of Milking	Slow					█	█	█	Fast N/A
Locomotion	Poor					█	█	█	Excellent N/A
Composite Traits									
Dairy Strength	Poor					█	█	█	Excellent 1.6
Legs & Feet	Poor					█	█	█	Excellent 1.2
Mammary	Poor					█	█	█	Excellent 1.2

Milk kgs	513
Fat kgs	21.1
Fat %	-0.11
Prot kgs	15.7
Prot %	-0.07
SCC	-3
Rel %	70
PIN £	30
PLI £	114
PTAT	1.7
Lifespan	-0.1
Fertility In	-3.5

- ✓ Impressive milk
- ✓ Impressive bodies
- ✓ Tight shallow udders
- ✓ Superb Action son



LEGACY JH1F

Hollylane Lilibet's Legacy

Perimeter x VG89 Renaissance x EX92 (3) Lester x SUP-EX Title



Dtr: Willowa Lilybet Renaissance

Dtr: Maughlin Legacy Icicle

Dtr: Fleuve Star Legacy

Photos by left to right: Jane Steel, Elly Geverink, Cybil Fisher

Trait		-3	-2	-1	0	1	2	3		Value
Type Merit	Poor								Excellent	1.5
Stature	130cm								154cm	1.3
Chest Width	Narrow								Wide	-0.7
Body Depth	Shallow								Deep	0.4
Angularity	Coarse								Sharp	0.9
Rump Angle	High pins								Low pins	1.3
Rump Width	Narrow								Wide	1.7
Rear Legs Side	Straight								Sickled	-1.9
Foot Angle	Low								Steep	2.8
Fore Udder Attach	Loose								Tight	0.7
Rear Udder Height	Very Low								Very high	1.0
Udder Support	Broken								Strong	1.6
Udder Depth	Below hock								20cm above	2.1
Teat Position Rear	Outside								Close	N/A
Teat Position Side	Close								Apart	-0.9
Teat Length	Short								Long	0.9
Temperament	Poor								Good	N/A
Ease of Milking	Slow								Fast	N/A
Locomotion	Poor								Excellent	0.4
Composite Traits										
Dairy Strength	Poor								Excellent	0.8
Legs & Feet	Poor								Excellent	1.1
Mammary	Poor								Excellent	1.5

Milk kgs	191
Fat kgs	9.6
Fat %	-0.01
Prot kgs	8.9
Prot %	0.03
SCC	-6
Rel %	90
PIN £	18
PLI £	150
PTAT	1.5
Lifespan	0.2
Fertility In	10.1



- Top Canadian LPI sire
- Excellent udders, legs and feet
- Positive components
- Low somatic cells

AI Code: J2044 HBN: 76-9240969 aAa: 315 Source: Canada



BELLES PRIDE

Potterswalls Belles Pride

Hollylane R Simbas Pride x EX95 (5) Just Wait x EX91 (2)
Counciller x EX93 Brass Major x EX90 Magic Duncan

SEXED SEMEN
NOW
AVAILABLE
LIMITED SUPPLY



Dtr: Potterswalls Prides Glamour VG87

Photo by Jane Steel

Trait		-3	-2	-1	0	1	2	3		Value
Type Merit	Poor								Excellent	2.4
Stature	130cm								154cm	1.5
Chest Width	Narrow								Wide	0.2
Body Depth	Shallow								Deep	1.1
Angularity	Coarse								Sharp	0.8
Rump Angle	High pins								Low pins	0.2
Rump Width	Narrow								Wide	3.2
Rear Legs Side	Straight								Sickled	-1.2
Foot Angle	Low								Steep	1.5
Fore Udder Attach	Loose								Tight	1.4
Rear Udder Height	Very Low								Very high	1.3
Udder Support	Broken								Strong	1.1
Udder Depth	Below hock								20cm above	2.0
Teat Position Rear	Outside								Close	N/A
Teat Position Side	Close								Apart	1.6
Teat Length	Short								Long	0.2
Temperament	Poor								Good	N/A
Ease of Milking	Slow								Fast	N/A
Locomotion	Poor								Excellent	1.3
Composite Traits										
Dairy Strength	Poor								Excellent	0.7
Legs & Feet	Poor								Excellent	1.8
Mammary	Poor								Excellent	2.4

Milk kgs	-36
Fat kgs	3.1
Fat %	0.1
Prot kgs	0.9
Prot %	0.05
SCC	17
Rel %	32
PIN £	5
PLI £	51
PTAT	2.4
Lifespan	0.2
Fertility In	-0.2



- ✓ Proven with fantastic Type
- ✓ 7 Generations of excellent cows
- ✓ Sired by a tremendous udder strength bull
- ✓ Alternative pedigree

AI Code: J2068 HBN: 04-55007 aAa: N/A Source: UK



LIX

DJ Lix

Q Lor x Q Zik x ODA Rix



DJ Lix daughter

DJ Lix daughter

Pictures by Elly Geverink

Trait		-3	-2	-1	0	1	2	3	Value
Type Merit	Poor								Excellent 1.3
Stature	130cm								154cm 0.2
Chest Width	Narrow								Wide 0.5
Body Depth	Shallow								Deep 0.5
Angularity	Coarse								Sharp 0.7
Rump Angle	High pins								Low pins -0.4
Rump Width	Narrow								Wide -1.1
Rear Legs Side	Straight								Sickled -0.3
Foot Angle	Low								Steep -0.5
Fore Udder Attach	Loose								Tight 1.4
Rear Udder Height	Very Low								Very high 1.1
Udder Support	Broken								Strong 1.7
Udder Depth	Below hock								20cm above 1.9
Teat Position Rear	Outside								Close N/A
Teat Position Side	Close								Apart N/A
Teat Length	Short								Long 1.1
Temperament	Poor								Good N/A
Ease of Milking	Slow								Fast N/A
Locomotion	Poor								Excellent N/A
Composite Traits									
Dairy Strength	Poor								Excellent 0.7
Legs & Feet	Poor								Excellent 0.1
Mammary	Poor								Excellent 1.9

Milk kgs	79
Fat kgs	24
Fat %	0.37
Prot kgs	13.4
Prot %	0.2
SCC	-11
Rel %	76
PIN £	40
PLI £	188
PTAT	1.3
Lifespan	0.1
Fertility In	23



- ✓ Great body strength
- ✓ Excellent udders
- ✓ High components
- ✓ Low cell count

AI Code: J2252 HBN: 302997 Source: Denmark



MAY

JH1F



DJ May

Q Mirage x Fyn Lemvig x Fyn Tanic



Dtr: Hagenbjerggard May Angel

Dtr: Clifton May Ellie VG87

Dtr: Clifton May Pippa VG87

Photos by left to right: Ely Geverink, Jane Steel, Sheila Metcalfe

Trait		-3	-2	-1	0	1	2	3		Value
Type Merit	Poor					█			Excellent	1.3
Stature	130cm					█			154cm	1.6
Chest Width	Narrow					█			Wide	0.3
Body Depth	Shallow					█			Deep	0.6
Angularity	Coarse					█			Sharp	0.9
Rump Angle	High pins					█			Low pins	1.6
Rump Width	Narrow					█			Wide	0.5
Rear Legs Side	Straight					█			Sickled	1.4
Foot Angle	Low					█			Steep	0.3
Fore Udder Attach	Loose					█			Tight	1.6
Rear Udder Height	Very Low					█			Very high	0.5
Udder Support	Broken					█			Strong	0.7
Udder Depth	Below hock					█			20cm above	1.2
Teat Position Rear	Outside					█			Close	N/A
Teat Position Side	Close		█						Apart	-2.1
Teat Length	Short					█			Long	0.8
Temperament	Poor					█			Good	1.2
Ease of Milking	Slow					█			Fast	N/A
Locomotion	Poor					█			Excellent	-0.1
Composite Traits										
Dairy Strength	Poor					█			Excellent	0.8
Legs & Feet	Poor					█			Excellent	-0.3
Mammary	Poor					█			Excellent	1.7

Milk kgs	238
Fat kgs	16.7
Fat %	0.07
Prot kgs	5.6
Prot %	-0.07
SCC	-6
Rel %	94
PIN £	17
PLI £	101
PTAT	1.3
Lifespan	0.1
Fertility In	1.9



- ✓ Superb Type
- ✓ Long living cows
- ✓ Best udder sire in Denmark
- ✓ Impressive UK progeny

AI Code: J9115 HBN: 66-302229 aAa: 651 Source: Denmark



TEQUILA

Tower Vue Prime Tequila

Primetime x EX94 Lester Sambo x VG87 Regal



Dtr: Blue Mountain Tequila Tina Marie

Dtr: Norse Star Tequila Willa VG86

Dtr: Norse Star Tequila N2510 VG87

Photos by left to right: Jenny Thomas, Beth Hedges, Beth Hedges

Trait		-3	-2	-1	0	1	2	3	Value
Type Merit	Poor							Excellent	3.5
Stature	130cm							154cm	3.4
Chest Width	Narrow							Wide	2.2
Body Depth	Shallow							Deep	N/A
Angularity	Coarse							Sharp	1.9
Rump Angle	High pins							Low pins	-0.8
Rump Width	Narrow							Wide	2.3
Rear Legs Side	Straight							Sickled	-3.3
Foot Angle	Low							Steep	2.6
Fore Udder Attach	Loose							Tight	2.7
Rear Udder Height	Very Low							Very high	2.2
Udder Support	Broken							Strong	2.2
Udder Depth	Below hock							20cm above	2.5
Teat Position Rear	Outside							Close	N/A
Teat Position Side	Close							Apart	N/A
Teat Length	Short							Long	1.5
Temperament	Poor							Good	N/A
Ease of Milking	Slow							Fast	N/A
Locomotion	Poor							Excellent	N/A
Composite Traits									
Dairy Strength	Poor							Excellent	1.7
Legs & Feet	Poor							Excellent	2.2
Mammary	Poor							Excellent	3.1

Milk kgs	-170
Fat kgs	-1.4
Fat %	0.15
Prot kgs	-2.5
Prot %	0.08
SCC	4
Rel %	61
PIN £	-1
PLI £	39
PTAT	3.5
Lifespan	0.2
Fertility In	-3



- World No.1 type sire
- Outstanding udders
- Component improver
- Outcross pedigree

AI Code: J2233 HBN: 76-114816452 aAa: 234 Source: USA



ZAGA

DJ Zaga

Q Zik x FYN Lemvig x JAS Hot



Zaga daughter

Photo by Elly Geverink

MAXIMUS

JH1F

Sunset Canyon Maximus

Fyn Lemvig x EX93(3) Fyn Haug x Fyn Index



Dtr: Fourcrosses Maximus Pineapple EX91

Photo by Lucinda Morgan

SUCCESS

JH1F

Buttercrest Success

Iatola x Rocket x Exceed

NEW



Dtr: Rock Top Success 9702

Photo by John Erbsen

- ✓ Top Components and Type Sire
- ✓ Top.10 PLI
- ✓ Powerful Frames
- ✓ Good Type and Udders



AI Code: J2208 HBN: 66-302857 aAa: 531 Source: Viking



- ✓ Open Dairy Cows
- ✓ High PLI
- ✓ Superb longevity
- ✓ Breed leading component improver



AI Code: J9361 HBN: 76-111355530 aAa: 156 Source: USA



- ✓ Strong dairy cows
- ✓ Ideal legs and feet
- ✓ High, wide udders
- ✓ Different cow family

HBN: 76-115517525 aAa: 564 Source: USA



Rapid Bay

Rapid Bay is a name that is admired across the world of Jerseys. Owned by Steve Borland, this farm in Quebec, Canada is home to a selection of the greatest cows of the breed. For example, one resident is Vandenberg Amedeo Gorgeous Excellent-97, twice Grand Champion Jersey at the Royal Winter Fair in Toronto and Supreme Champion All Breeds in 2007. A former member of the herd was the illustrious Duncan Belle, the cow that has made the greatest impact on the Jersey breed over the past couple of decades.

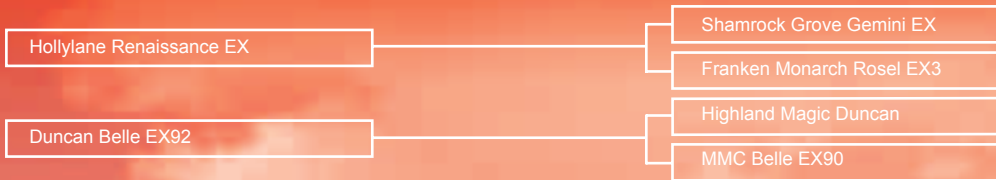
Cogent Breeding has secured the UK agency rights for the Rapid Bay portfolio and will be offering and promoting groups of their sires as time goes by.

To launch our new agreement with Rapid Bay, on offer is semen from four sires which combine National Grand Champions from the closest maternal relatives:

- ✦ **The plus-proven Rapid Bay Ressurrection, son of Hollylane Renaissance out of Duncan Belle**
- ✦ **Rapid Bay Reagan, by Belle's Connection out of the Excellent-95 superb brood cow, Rapid Bay Whistler's Rumour**
- ✦ **Rapid Bay Gammon-ET, son of Vandenberg Amedeo Gorgeous by BW Legion (the first and only Legion son in the UK)**
- ✦ **Arethusa Jade Velocity, by Belles Jade out of the Excellent-91 Response daughter of Huronia Centurion Veronica, Excellent-97**

What an offering to kick off the New Year! Call today to take advantage of these outstanding Rapid Bay bulls and find out how they can raise the standard of your herd.

RAPID BAY RESSURECTION



Dtr: Huronia RBR Bree EX96

Ressurrection is siring top conformation cows with great dairy strength and powerful front ends. They are long-lasting cows with good production. Use this sire to bring strength and good conformation into your herd.

RAPID BAY REAGAN-ET



Reagan's full sister: Rapid Bay Connect Roxana

The first daughters of Reagan have calved and are superb young cows with balanced bodies and outstanding udders. Reagan's dam "Rumour" milked well into her 15th year and was placed 2nd Mature Cow at the Royal Winter Fair at twelve years of age! Reagan can be relied on to sire correct type cows with good production and extended longevity



ARETHUSA JADE VELOCITY



Arethusa Response Vivid-ET EX91

Velocity comes with an exciting pedigree with his two grandams and a great-grandam all National Grand Champions ... a unique package! His dam is one of the hottest young cows of the breed today and this brilliant mating of Jade - Duncan Belle's son, to Vivid - Veronica's daughter, is sure to make Velocity an electrifying young sire to use in your herd.

RAPID BAY GAMMON-ET ^{JH1F}



Dam: Vandenberg Amedeo Gorgeous EX97

Gammon is a highly popular young sire in Canada and the USA - he is a son of BW Legion, one of the most successful sires of recent years that left well developed daughters with outstanding dairyness and superb udders. The dam of Gammon is the illustrious "Gorgeous" cow that everyone admires.



COGENT SUPER SAMPLERS

SHELLEN PRECISION

Action x EX93(2) Connection x
EX94(8) Nemo x EX90 Magic

SEATTLE COWS
NOW
AVAILABLE

SHELLEN ENGAGE

Action x EX90(2) Paramount
x EX91 Zeebull

SEATTLE COWS
NOW
AVAILABLE

LAGANGREEN ROYBOY

DJ Lirsk x VG86 Impuls
x EX90 Sambo

SEATTLE COWS
NOW
AVAILABLE

PARKPLACE FLAGSHIP

Iatola x EX90 Berretta x
EX90 Fascinator

SEATTLE COWS
NOW
AVAILABLE

Dam: Shellen Connection Prance EX93(2)

Dam: Shellen Paramount Elsie EX90(2)

Dam: Lagangreen Impuls Aneka VG86

Maternal sister: Parkplace Jaces Flower VG88

- ✓ 4 Generations average 92 points
- ✓ Excellent longevity
- ✓ From the renowned 'Prance' family

- ✓ 4 Generations VG or EX
- ✓ Sire is top udder bull
- ✓ Superb production

- ✓ Outstanding production family
- ✓ Longevity - last 3 gens are still alive
- ✓ Strength & power

- ✓ Predicted high milk & PLI
- ✓ Top component family
- ✓ Long lasting cows

www.cogentuk.com

Other available Jersey sires

NAME	SIRE	MGS	PLI	MILK	FAT%	PROT%	SCC	LS	FI	PTAT
DJ OLIVER	Q IMPULS	Q HIRSE	161	29	0.33	0.22	-6		4	-0.4
DJ TIM DJHB	JAS HOT ET	FYN LEMVIG ET DJHB	135	419	-0.03	-0.07	-6	0.3	-1	0
DJ BEO DJHB	JAS BEL US	JAS HOT ET	134	348	0.02	0.01	-5	0	1.7	1.1
Q ZIK	JAS ZORINO	OJY MIKKEL	132	41	0.23	0.11	-9	0.3	-4.1	1.4
DJ HAGRI DJHB	Q HENIUS DJHB	JAS MITAGE DJHB	119	-19	0.23	0.02	-5	0.3	1.7	1.1
JAS ARTIST JH1F	SKAE IDE	FYN TANIC	98	460	-0.14	-0.12	-9	0.2	-1.8	0.5
WILDERNESS BLUEPRINT CJCC JH1F	ODA HEINO DJHB	MASON BOOMER SOONER BERRETTA	96	503	-0.06	0	14	-0.2	-5.7	0
SUNSET CANYON LEVON ET CJCC JH1F	O.F. BARBER ROCKET	FYN LEMVIG ET DJHB	90	562	-0.28	-0.1	-8	-0.2	0.4	1.3
WF CENTURN SEIZE THE MOMENT ET JH1F	SOONER CENTURION ET	GLENHOLME COUNCILLER CJCC	73	12	0.09	0.09	-4	0	1.6	1.2
QUINTRELL MAXIMUS COBALT	SUNSET CANYON MAXIMUS ET	PERFECTION JUDES STYLE MASTER CJCC	57	244	-0.02	0.01	-2	0.2	-7.3	0
PARKPLACE ESCALADES GOLD ET	FERREIRA MANNIX ESCALADE ET	MASON BOOMER SOONER BERRETTA	51	384	-0.21	-0.06	12	-0.1	0	0.7
SUPERSAMPLERS										
PARKPLACE FLAGSHIP	SC PARAMOUNT IATOLA	MASON BOOMER SOONER BERRATTA	69	264	-0.06	-0.05	7	0.1	-0.5	1
YELLOW BRIER HEATHS GUAPO	JEWELS JURISDICTION	PIEDMONT GROVE AMEDEO	-20	-392	0.26	0.07	6	0.3	1	1.4
SOWDEN LANCELOT	GIPRAT BELLES CONNECTION	POTTERSWALLS LORD JUNO	96	46	0.08	0.06	N/A	N/A	N/A	1.8
SC PRESTIGE JH1F	SOONER CENTURION	DUNCAN CHIEF	28	164	-0.08	-0.02	N/A	N/A	N/A	1.3
VJ LASS	DJ LIRSK	Q IMPULS	127	189	0.09	0.08	N/A	N/A	N/A	0.4
VJ ZEUS	Q ZIK	Q HIRSE	109	35	0.19	0.11	-6	0.1	-0.2	0.4

Top class beef sires for the dairy herd

Cogent has invested heavily in order to provide you, the UK dairy farmer, with a comprehensive range of beef bulls with outstanding qualities.

We currently have 15 different beef breeds available, offering a blend of small birth weight, excellent conformation, weight gain, muscle development and, most importantly, calving ease. Quality and reliability are assured with new bulls graduating through Cogent's globally renowned Visions Young Sire Beef Programme, giving you complete confidence in the bulls you choose.



For more information please call Freephone: 0800 783 7258



Contacts

- For more information please feel free to contact a member of our team.



➔ **Ashley Fleming**
NI Regional Manager
+44 (0)7775 561823



➔ **Richard Lloyd**
Central Regional Manager
+44 (0)7802 959293



➔ **Ed Pope**
South Regional Manager
+44 (0)7789 756110



➔ **Ian Plews**
Scotland & North
Regional Manager
+44 (0)7855 506136



➔ **Roger Trehella**
UK Jersey Society Field
Services Manager
+44 (0)7968 182896



➔ **Derrick Frigot**
Jersey Specialist
+44 (0)7797 710215



➔ **Gerbrich Andringa**
Export Manager
+44 (0)7979 053525



➔ **Hugh Pocock**
UK Sales & Genetics Manager
+44 (0)7789 171378

For more information please call Freephone: 0800 783 7258
Cogent Breeding Ltd, Lea Lane, Aldford, Chester, CH3 6JQ.

